

## Ron StageMaster™ RSM 6000 G5 Wireless Shackle Pin Load Cells

Extremely low headroom and quick installation

### TECHNICAL SPECIFICATIONS



**R.F.:** 2.4 GHz range – other ranges available.

**R.F. transmission range:** Up to 450'/150m in normal operation conditions (outdoors, line of sight). Extended transmission range is optional.

**Safety Factor:** 5:1 and 10:1 standard. Higher safety factors are available.

**Fatigue rated:** All Eilon Engineering load cells are Fatigue Rated according to ASME BTH-1 and IEC 61508. Fatigue Rated means an unlimited number of load cycles (Provided capacity is not exceeded).

**Proof load:** 200%.

**Accuracy Class:** 0.5% to 2%.

**Capacities:** From 0.25t to 12.5t.

**Display:** Using a laptop or PC, the operator can monitor and control the loads of up to 200 load cells, per monitoring station, simultaneously, having on one single screen all the relevant information derived from the load cells: Sum (group sum and total structure sum), Max, Tare, Zero, Group (LC), Overload detection,

Stage-plan layout, Low battery indication etc.

**Functions:** Sum, Max, Tare, Zero, Group (LC), Overload detection and alert (visual and audible), Low battery indication, Reports data base, User calibration, Group functions (Sum, Max, Zero, Tare, Overload and customized overload detection), Plan/layout archiving.

**Additional Features:** Tablet and smart phone compatible.

**Units:** Selectable: Tons, Kgs, Lbs.

**Load Cell Material:** Made of high-strength, PH stainless steel.

**Power:** 4 x AA 1.5 Volt Alkaline disposable batteries rated 3Ah for each load cell. Batteries will function up to 5000 hours.

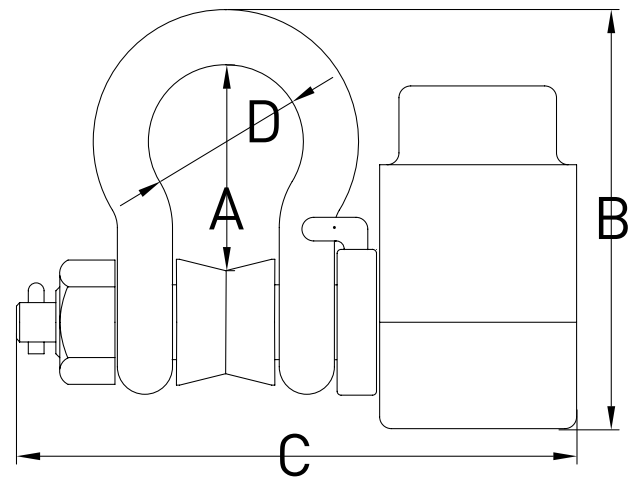
**Calibration:** User calibration. Initial factory calibration, certified and fully traceable to NIST.

**Temperature Range:** Load cell: -15°F to +175°F / -25°C to +80°C.

**Environmental:** IP67.



Cat no.	Capacity tons	Safety Factor	Weight		Shackle	A		B		C		D	
			kgs	lbs		mm	inch	mm	inch	mm	inch	mm	inch
SP-005-5	0.5	5:1	1.1	2.4	5/8"	58	2.3	107	4.3	140	5.5	43	1.7
SP-01-5	1	5:1	1.1	2.4	5/8"	58	2.3	107	4.3	140	5.5	43	1.7
SP-015-5	1.5	5:1	1.1	2.4	5/8"	58	2.3	107	4.3	140	5.5	43	1.7
SP-02-5	2	5:1	1.1	2.4	5/8"	58	2.3	107	4.3	140	5.5	43	1.7
SP-025-5	2.5	5:1	1.1	2.4	5/8"	58	2.3	107	4.3	140	5.5	43	1.7
SP-03-5	3	5:1	1.1	2.4	5/8"	58	2.3	107	4.3	140	5.5	43	1.7
SP-04-5	4	5:1	1.1	2.4	5/8"	58	2.3	107	4.3	140	5.5	43	1.7
SP-05-5	5	5:1	1.1	2.4	5/8"	58	2.3	107	4.3	140	5.5	43	1.7
SP-06-5	6	5:1	2.7	6	1"	85	3.3	178	7	186	7.3	68	2.7
SP-08-5	8	5:1	2.7	6	1"	85	3.3	178	7	186	7.3	68	2.7
SP-10-5	10	5:1	2.7	6	1"	85	3.3	178	7	186	7.3	68	2.7
SP-12-5	12	5:1	2.7	6	1"	85	3.3	178	7	186	7.3	68	2.7
SP-005-10	0.5	10:1	1.1	2.4	5/8"	58	2.3	107	4.3	140	5.5	43	1.7
SP-01-10	1	10:1	1.1	2.4	5/8"	58	2.3	107	4.3	140	5.5	43	1.7
SP-015-10	1.5	10:1	1.1	2.4	5/8"	58	2.3	107	4.3	140	5.5	43	1.7
SP-02-10	2	10:1	1.1	2.4	5/8"	58	2.3	107	4.3	140	5.5	43	1.7
SP-025-10	2.5	10:1	1.1	2.4	5/8"	58	2.3	107	4.3	140	5.5	43	1.7
SP-03-10	3	10:1	2.7	6	1"	85	3.3	178	7	186	7.3	68	2.7
SP-04-10	4	10:1	2.7	6	1"	85	3.3	178	7	186	7.3	68	2.7
SP-05-10	5	10:1	2.7	6	1"	85	3.3	178	7	186	7.3	68	2.7
SP-06-10	6	10:1	2.7	6	1"	85	3.3	178	7	186	7.3	68	2.7



> The company reserves the right to make changes without notice.

## OPTIONS



- > Additional channels: 2 standard channels – up to 4 optional channels (recommended for large numbers of load cells and/or harsh conditions).
- > Set point, for integration of RSM system with any controller. Activates E-stop and/or audio visual alarm in case of overloads or underloads.
- > Real time cellular SMS alert on overload occurrence.
- > Single wire option for the wireless receiver.
- > Slave and master CRRs: For increased range, harsh conditions, and the ability to monitor several halls in one control room.
- > Group screen view: For viewing individual group rigging plans, each with a specific background (included in orders of 50 load cells and up).