

CM LODESTAR ELECTRIC CHAIN HOIST SINGLE PHASE

The Lodestar features quieter operation, an environment friendly design, easier access to key components, higher duty cycles, less maintenance, and enhanced safety features.

The next generation of Lodestar takes lifting to new heights for professionals in any industry, exceeding H4 requirements, engineered for high duty cycles and the toughest applications.



Features:

- Cast aluminium, lightweight housing covered with acid resistant powder coated paint
- IP 66 enclosure rating
- Motor thermal protection across all models
- The 5 Pocket Lift Wheel improves chain life through better chain and lift wheel engagement, smoother lifting and reduced vibration
- Lifetime warranty on all mechanical components
- Overload protector
- Adjustable screw limit switch that automatically stops the hook at any predetermined point when either lifting or lowering
- Fabric chain container and rigid hook suspension as standard
- Primary and secondary transformer fusing
- EN grade zinc plated load chain (optional black phosphate or stainless steel chain)
- Metal and stainless steel chain containers (optional)
- Swivel top hook suspension (optional)
- Double DC brake (optional)
- Heavy-duty DC brake is designed for a long service life
- Clutch is located outside the load path preventing slipping of the load in an overload condition when the brake is not powered
- Lifetime grease-lubricated Gear Box means no oil change is required
- Made in the USA

The information shown is to be used as a guide only. Specifications are subject to change without notice. All materials handling or lifting jobs should be assessed individually. Pacific Hoists products are NOT to be used for lifting or lowering persons.

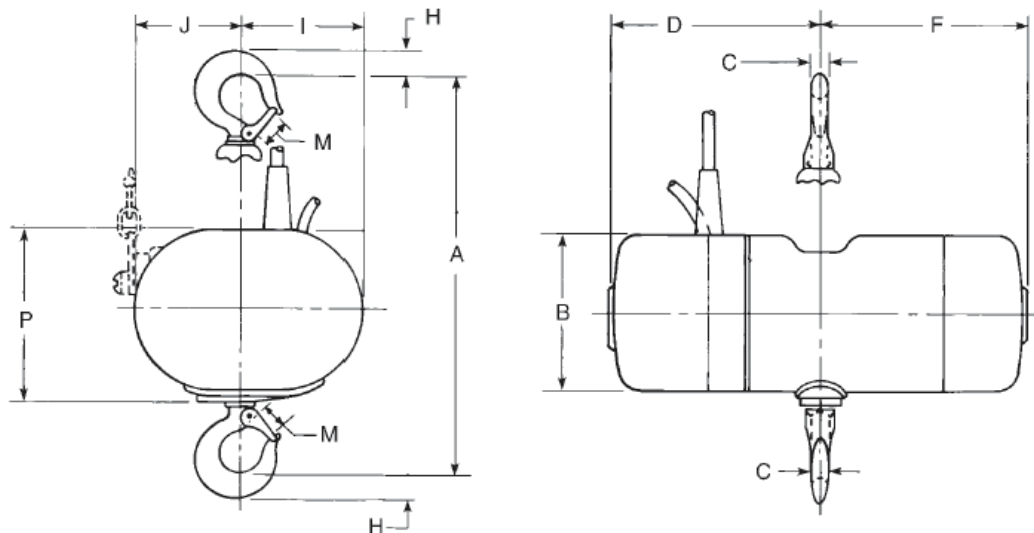
Specifications

Capacity	250 KG	500 KG	1 TONNE	2 TONNE	3 TONNE
Stock Code	2732NHCF	2752NHCF	3522NHCF	3532NHCF	9501NHCF
Chain Dimension (mm)	6.35 x 18.9	6.35 x 18.9	7.92 x 21.8	7.92 x 21.8	7.92 x 21.8
Lifting Speed (m/min)	8.1	4.1	4.1	2.0	1.4
Motor (kW)	0.31	0.31	0.62	0.62	0.62
E.D. Rating (%)	40	40	40	40	40
Load Chain Fall No.	1	1	1	2	3
Weight (kg)	28	28	51	59	72

The information shown is to be used as a guide only. Specifications are subject to change without notice. All materials handling or lifting jobs should be assessed individually. Pacific Hoists products are NOT to be used for lifting or lowering persons.

Dimensions (mm)

CAPACITY	250 KG	500 KG	1 TONNE	2 TONNE	3 TONNE
A	429	429	496	613	613
B	201	201	193	194	194
C	18	18	21	29	29
D	298	298	255	253	253
F	225	225	330	329	329
H	25	25	28	38	38
I	113	113	178	179	179
J	113	113	143	142	142
M	30	30	32	33	33
P	168	168	208	208	208



Sydney - Head Office

24 Foundry Road
Seven Hills, NSW 2147
Australia

+61 (0)2 8825 6900

+61 (0)2 8825 6999

Western Australia

8 Monash Gate,
Jandakot, 6164 WA
Australia

+61 (0)8 9417 2933

+61 (0)8 9417 3533

Auckland NZ

11 Druces Road
Wiri, Auckland 2104
New Zealand

+64 (0)9 263 5566

+64 (0)9 263 5567

