

### Introduction

#### ► Feature

- Lifting capacity: 300 kg wire rope top layer
- Lifting height: 12 m
- Lifting speed: 5 M/min
- Motor output: 300 W x 35 A at DC12V
- Brake: Electromagnetic and mechanical ratchets
- Control: Pendant switch powers the hoist

#### ► Unpacking

- Hoist assembly..... 1pc
- Control ass'y..... 1pc
- Pendant switch CPB-161 w/cord 0.75 mm x 3C x 4.4m..... 1pc
- Wire rope 4.8 mm x 12 m w/safety hook..... 1pc

#### ► Read this manual carefully

You should carefully read and understand this manual before operating it. Careless hoist operation may result in personal injury hazards or property damage.

#### ► Information requesting or parts ordering

Please specify the followings information:

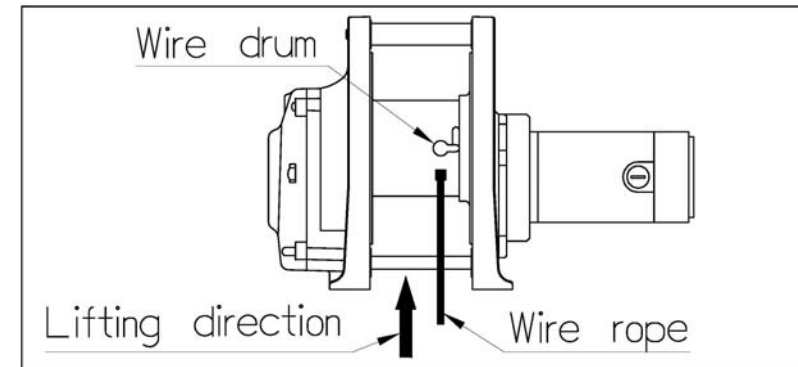
- Hoist PN
- Serial number
- Part description
- Replacement part number
- Quantity for each part

### Installation

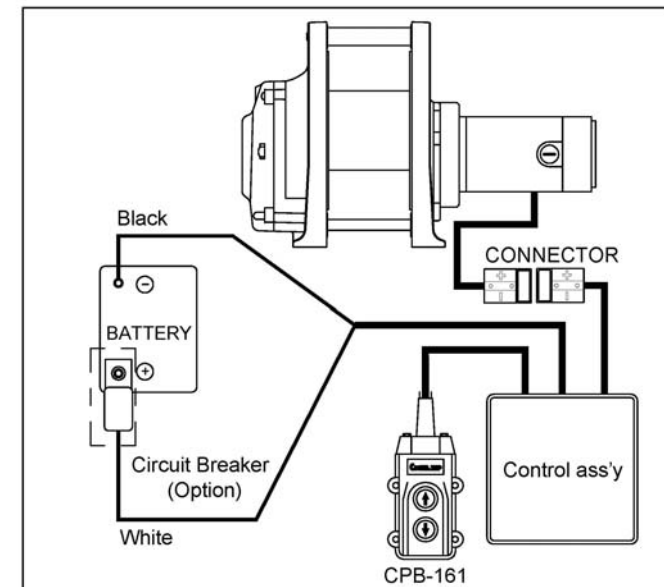
Before using the hoist, make sure all electrical components have no corrosion or damaged; the environment should be clear and dry.

#### ► Wire rope replacement

- Insert the wire rope into the hole of drum and fix it with a P. T. screw, then press the "UP" button of switch for rotate the drum in the lifting direction.
- Wind the wire rope accurately around the drum, and an irregular winding will cause the load to be swing, thus damaging the wire and reducing the life of hoist.



#### ► Wiring Diagram



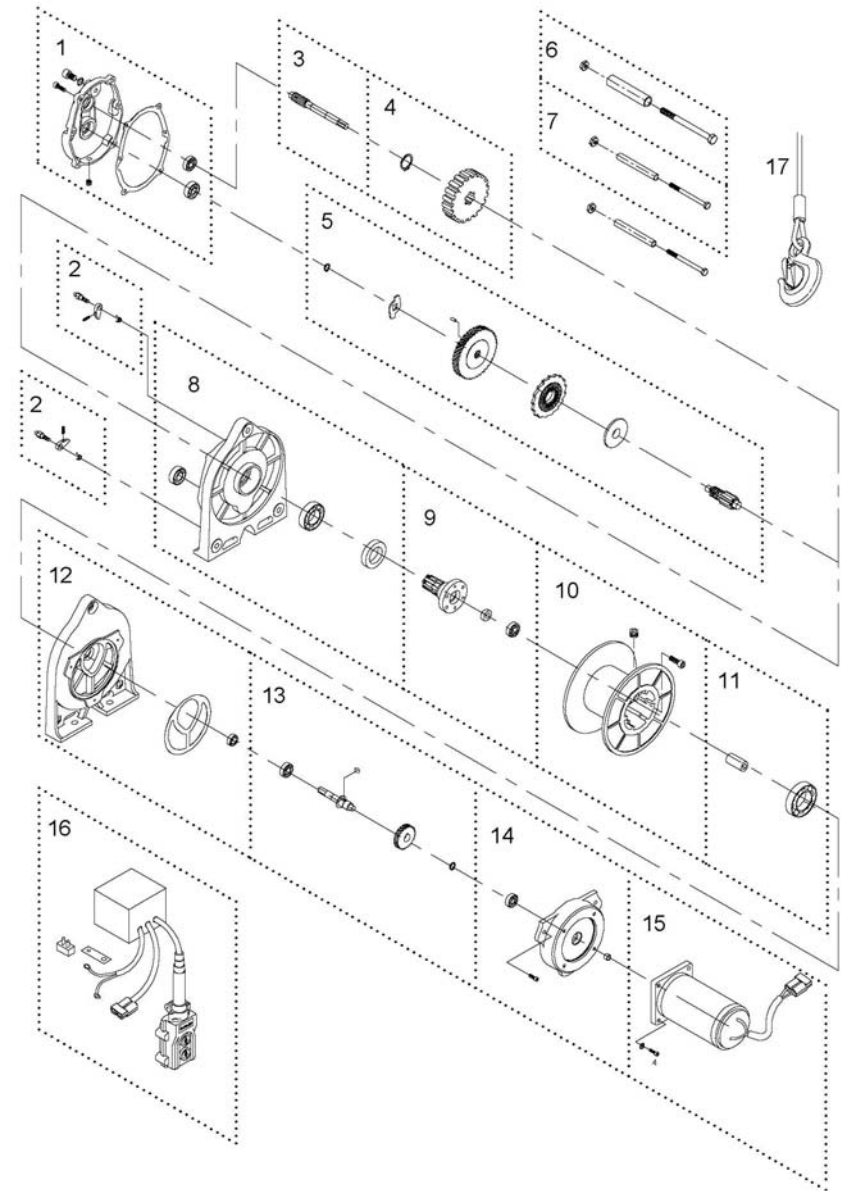
## Warning

- The hoist is not intended to be used in any manner for the movement or lifting of personnel.
- The lifting capacity shown is based on the top layer of rope on the drum.
- The rope winding on the drum shall remain 5 wraps from the drum.

## Parts List

Item No.	Description	Part No.	Qty
1	Gearbox rear cover kit	880546	1
2	Ratchet stopper kit	880547	2
3	2 <sup>nd</sup> shaft	880548	1
4	3 <sup>rd</sup> gear kit	880549	1
5	Brake kit	881516	1
6	Tie bar kit	880552	1
7	Tie bar kit A	880553	2
8	Gearbox support rack kit	880555	1
9	Output shaft kit	880556	1
10	Drum kit	881518	1
11	Motor coupling kit	881515	1
12	Motor support rack kit	880558	1
13	Torque shaft kit	881517	1
14	Motor housing kit	881908	1
15	Motor kit 12V	881909	1
16	Control ass'y	881911	1
17	Wire rope w/hook	881926	1

## Hoist Assembly



Ver:5