



Electric Winch

Model: CWG-30565

P/N: w/5.5 kw x 4P motor			
156828	380V50Hz	156829	380V50Hz
		156812	380V50Hz
		152258	400V50Hz
159816	415V50Hz	152480	480V60Hz
152652	415V50Hz	155566	220V50Hz

Introduction

► Feature

- Lifting capacity: 1,100 kg at 50Hz ; 1,000 kg at 60Hz · wire rope top layer
- Lifting height: 97 m
- Lifting speed: 4P: 14-25 m/min at 50Hz ; 6P: 9.2-16.4 m/min at 50Hz
4P: 16.8-30 m/min at 60Hz
- Brake: Electromagnetic spring-applied failsafe brake
- Control: Pendant switch powers the winch

► Unpacking

- Winch assembly 1pc
- Wire rope 12 mm x 100 m w/safety hook 1pc
- Wire rope w/hook 12 mm x 40 m for PN: 1pc
- Low voltage control ass'y LV-320 1pc
- Low voltage control ass'y LV-360 for PN:155566 1pc
- Pendant switch PB-306 w/cord 1.25 mm² x 3C x 3 m 1pc

► Read this manual carefully

You should carefully read and understand this manual before operating it. Careless winch operation may result in personal injury hazards or property damage.

► Information requesting or parts ordering

Please specify the followings information:

- Winch PN
- Serial number
- Part description
- Replacement part number
- Quantity for each part

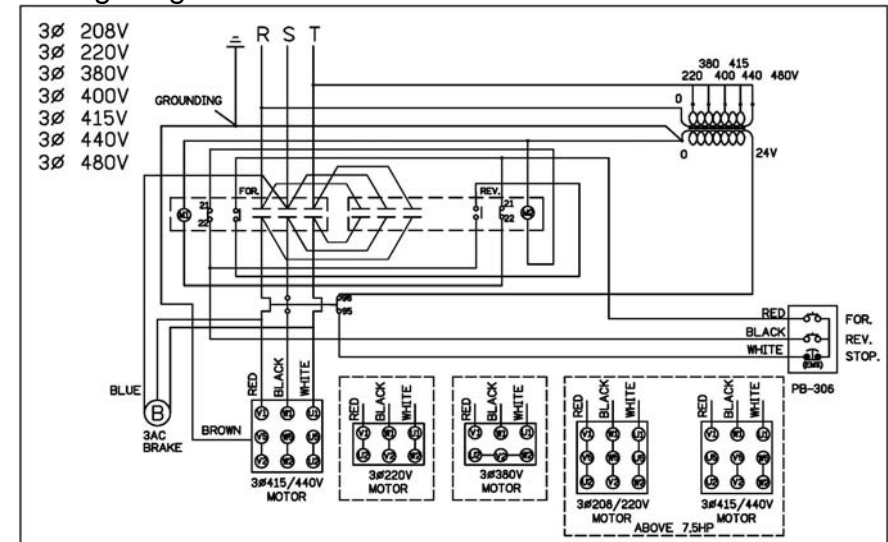
Installation

Before using the winch, make sure all electrical components have no corrosion or damaged; the environment should be clear and dry.

► Performance

Winch Model		CWG-30565														
Motor		5.5 x 4						3.8 x 6								
Recommend Wire Rope	Size(mm)	12.0														
	Breaking (kg)	6,680														
1 st Layer	Rated Load (kg)	50Hz	1,968	2 nd Layer	Rated Load (kg)	50Hz	1,700	3 rd Layer	Rated Load (kg)	50Hz	1,496					
		60Hz	1,789			60Hz	1,545			60Hz	1,360					
	Speed (m/min)	50Hz	4P 14	Speed (m/min)	50Hz	4P 16.2	Speed (m/min)	50Hz	4P 18.4							
		6P 9.2	6P 10.6		6P 12.1											
	60Hz	4P 16.8		60Hz	4P 19.4		60Hz	4P 22.1								
Rope-Winding Cumulating Sum (m)		12			Rope-Winding Cumulating Sum (m)			26			Rope-Winding Cumulating Sum (m)			42		
4 th Layer	Rated Load (kg)	50Hz	1,336	5 th Layer	Rated Load (kg)	50Hz	1,207	6 th Layer	Rated Load (kg)	50Hz	1,100					
		60Hz	1,215			60Hz	1,097			60Hz	1,000					
	Speed (m/min)	50Hz	4P 20.6	Speed (m/min)	50Hz	4P 22.8	Speed (m/min)	50Hz	4P 25							
		6P 13.5	6P 15.0		6P 16.4											
	60Hz	4P 24.7		60Hz	4P 27.3		60Hz	4P 30								
Rope-Winding Cumulating Sum (m)		59			Rope-Winding Cumulating Sum (m)			79			Rope-Winding Cumulating Sum (m)			100		

► Wiring Diagram



Warning

- The winch is not intended to be used in any manner for the movement or lifting of personnel.
- The lifting capacity shown is based on the top layer of rope on the drum.
- The rope winding on the drum shall remain 5 wraps from the drum.

Parts List

Item No.	Description	Part No.	Qty
1	Motor kit	As arranged	1
2	Motor support rack kit	880723	1
3	Drum kit	880724	1
4	Connect shaft kit	880725	1
5	Tie bar kit	880726	4
6	Gearbox support rack kit	880727	1
7	2 nd stage carrier kit	881576	1
8	Ring gear kit	880730	1
9	1 st stage carrier kit	881577	1
10	1 st shaft kit	880733	1
11	Brake base kit	880625	1
12	Brake kit	As arranged	1
12-1	Brake disc	880626	2
12-2	Brake coil	As arranged	1
13	Brake rear cover	880627	1
14	Wire rope w/hook	880737	1
	Wire rope w/hook for PN:156812	883739	1
15	Low voltage control ass'y	As arranged	1
15-1	Remote control, PB-306	881048	1
16	Base plate kit	880738	1

Part No. configurations:

Cycle	Voltage	kw x p	Motor	kw x p	Motor
50 Hz	220 / 380 V	5.5 x 4	880637	3.8 x 6	880641
50 Hz	415 V	5.5 x 4	880638		
50 Hz	200 / 400 V	5.5 x 4	881448		
50 Hz	220 / 380 / 440V	5.5 x 4	882619		
60 Hz	220 / 380 V	5.5 x 4	880635		
60 Hz	240 / 480 V	5.5 x 4	881931		

Cycle	Voltage	Brake kit	Brake coil	LV-320	LV-360
50 Hz	220 V	880643	880647	881825	882326
50 Hz	380 V	881345	880648	881828	
50 Hz	400 V	881449	881450	881829	
60 Hz	415 V	881346	880649	881830	
60 Hz	480 V	881933	881934	881932	

Standard Value for brake coil:

Voltage	220V	380V	415V	440V	480V
Black & Blue wires	28Ω	108Ω	117Ω	126Ω	157Ω
Black & Red wires	12Ω	48Ω	52Ω	56Ω	60Ω
Red & Blue wires	15Ω	54Ω	62Ω	70Ω	97Ω

Winch Assembly

