



MANUAL LIFTER TROLLEY

INSTRUCTION MANUAL

Imported exclusively by Pacific Hoists Pty. Ltd. & Pacific Hoists Ltd.
In support of cancer charities in Australia & New Zealand



IMPORTANT

PLEASE READ THIS OPERATION MANUAL BEFORE USING THIS PRODUCT. THIS MANUAL CONTAINS IMPORTANT INFORMATION REGARDING SAFETY, OPERATION, INSTALLATION & MAINTENANCE.

ALWAYS OPERATE, INSPECT AND MAINTAIN THIS PRODUCT IN ACCORDANCE WITH INSTRUCTIONS IN THIS MANUAL

INTRODUCTION

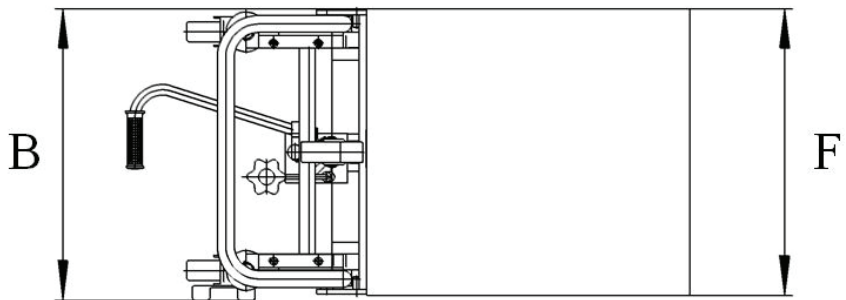
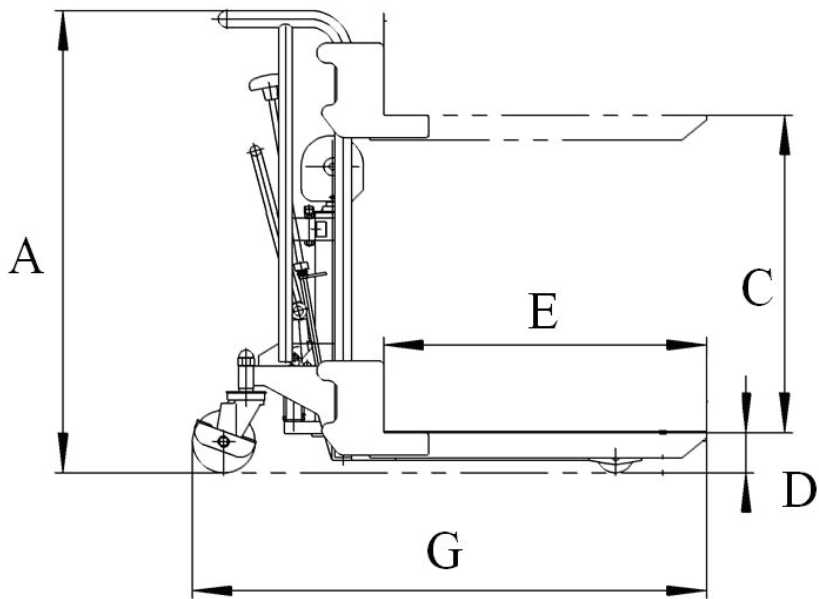
Thank you for purchasing your new Challenger Manual Lifter Trolley. The Manual Lifter Trolley is made of high quality steel which is designed to be durable, reliable and easy-to-use. Also choosing the Challenger brand directly supports cancer charities in Australia and New Zealand.

It is important that this manual be kept in a safe place where any operator of the Challenger Manual Lifter Trolley can refer to it and understand the operating principles of this device. All users of this Challenger Manual Lifter Trolley should read this manual in full and understand the safe operating principles of the device.

SPECIFICATIONS

Model	PS0412	PS0415	PS0417
Stock code	CMS120	CMS150	CMS170
Rated capacity (kg)	400		
Max. height (A) x width (B) (mm)	1425 X 600	1725 X 600	1925 X 600
Max. platform height (C) (mm)	1200	1500	1700
Min. platform height (D) (mm)	85		
Platform length (E) x width (F) (mm)	650 x 576		
Lifting height (mm)	1115	1415	1615
Max. trolley length (G) (mm)	1100		
Net Weight (kg)	81	91	99

SPECIFICATIONS



GENERAL PRECAUTIONS

- The operator should read the instructions before using this manual lifter trolley to avoid any injuries
- This manual lifter trolley is used to lift and lower loads within its rated capacity
- The manual lifter trolley should only be operated by persons who are authorised to do so
- To avoid injuries lower all loads at a slow speed
- Ensure all loads are secured correctly
- If the load moves when the manual lifter trolley is in use, brake immediately
- Distribute the weight of the load across both forks evenly, do not use a single fork only
- Do not load the manual lifter trolley with unstable or imbalanced loads
- Ensure correct maintenance of the manual lifter trolley according to service instructions
- Do not modify or repair the manual lifter trolley without first consulting the distributor
- When servicing the manual lifter trolley ensure all loads are removed and use the safety stopper to prevent the platform from lowering
- This manual lifter trolley is not designed to be weather resistant. When not in use store in dry conditions and ensure the forks are lowered

WARNINGS

- Do not place hands or feet under the platform
- Do not move the manual lifter trolley when the forks are in use
- Do not move the manual lifter trolley unless the forks are lowered to a safe position
- Do not put the foot in front of the swivel wheel, this may cause harm as the load is being lowered
- Do not overload the manual lifter trolley
- Do not use the manual lifter trolley on uneven surfaces
- Never use the manual lifter trolley for the transportation or movement of personnel

MAINTENANCE

REGULAR INSPECTION OF YOUR CHALLENGER MANUAL LIFTER TROLLEY WILL HAVE A TWOFOLD RESULT BY ENSURING THE UNIT IS SUITABLE FOR SAFE OPERATION AND WILL ASSIST WITH EXTENDING THE OPERATING LIFE OF THE UNIT. THE FOLLOWING INSPECTION SHOULD BE PERFORMED BOTH PRIOR TO AND AFTER, EVERY USE:

- Check for any bending or cracking on the manual lifter trolley
- Check for any oil leakage from the cylinder
- Check the subside of the manual lifter trolley while the platform is lifted to the highest position
- Check that the wheel movement of the manual lifter trolley is smooth
- Check the brake to ensure it functions correctly
- Check all the bolts and nuts are tightened firmly
- Change the hydraulic oil and lubrication levels periodically
- Ensure the manual lifter trolley is serviced and maintained correctly

CAUTION: DO NOT use the manual lifter trolley if any malfunction or fault is found

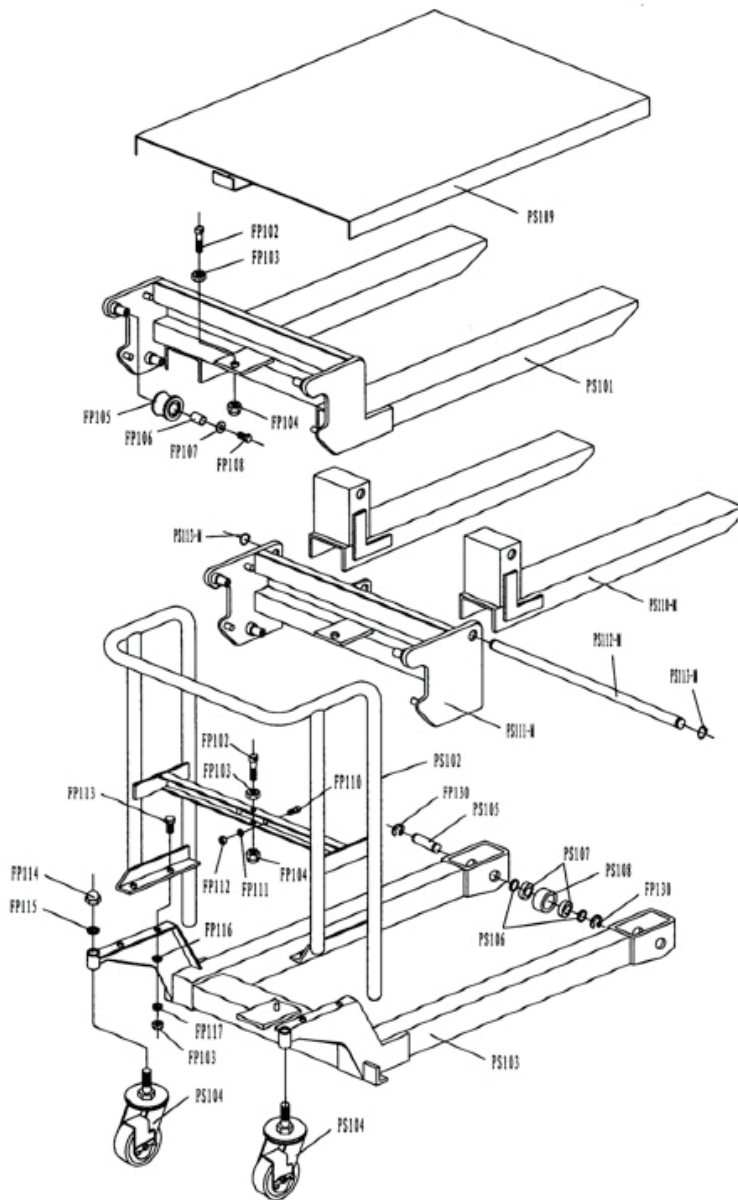
OPERATING INSTRUCTIONS

- Ensure brakes are engaged during loading and unloading of the manual lifter trolley
- To brake, press the brake pedals located on the rear of the swivel caster
- To release the brake, lift the break pedal
- To lift the forks, pump the lifting pedal until the forks reach the desired position. The platform may lower slightly once it has reached the highest position
- To lower the forks turn the knob counter-clockwise
- Do not overload the manual lifter trolley and ensure the load is within the rated capacity
- Do not side or end load. The load must be distributed on at least 80% of the table area

SPARE PARTS

No.	Description	Qty.	No.	Description	Qty.
PS101	Forks	1	FP116	Washer	4
FP102	Chain rod	2	FP117	Elastic washer	4
FP103	Nut	6	PS103	Mast base	1
FP104	Locking nut	2	PS104	Steering wheel	2
FP105	Roller	4	FP130	Circlip	4
FP106	Bushing	4	PS105	Roller shaft	2
FP107	Big Washer	4	PS106	Washer	4
FP108	Bolt	4	PS107	Bearing	4
PS102	Bar	1	PS108	Front wheel	2
FP110	Screw	2	PS109	Table	1
FP111	Washer	2	PS110 - M	Fork	2
FP112	Nut	2	PS111 - M	Pallet frame	1
FP113	Bolt	4	PS112 - M	Long shaft	1
FP114	Nut	2	PS113 - M	Circlip	2
FP115	Washer	2			

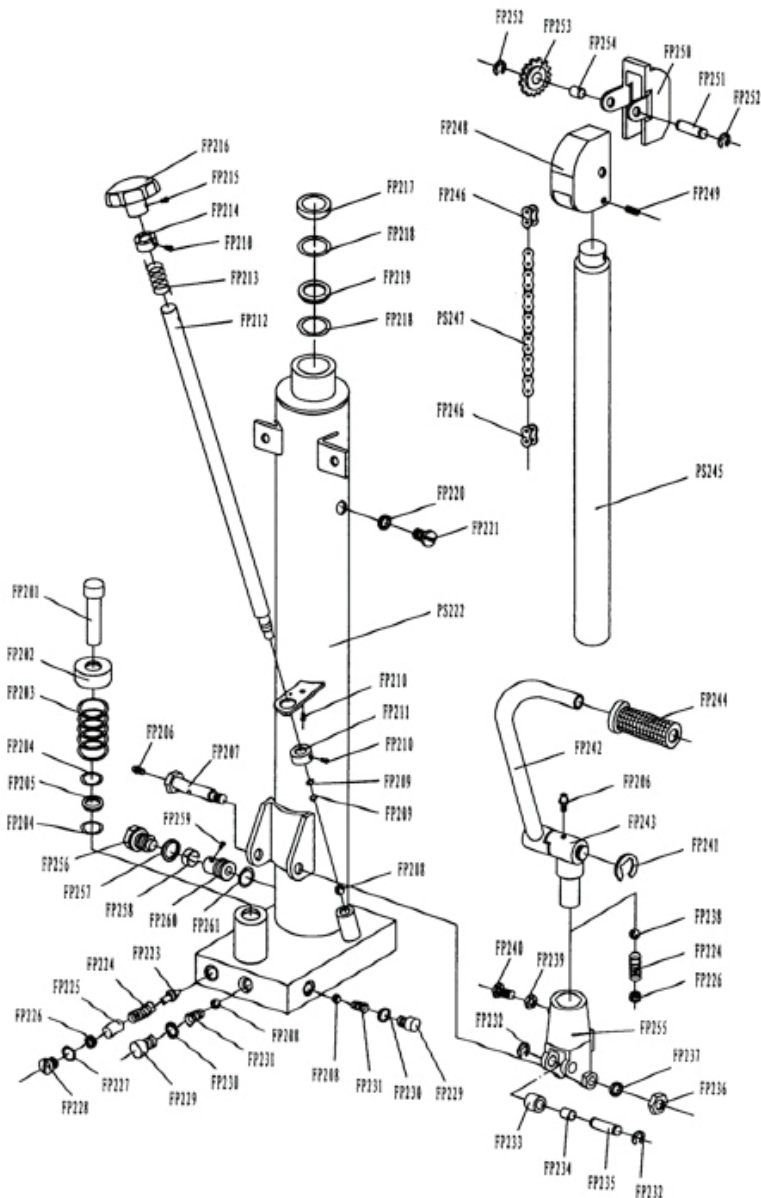
SPARE PARTS



SPARE PARTS

No.	Description	Qty.	No.	Description	Qty.
FP201	Small piston rod	1	FP232	Split pin	2
FP202	Spring cover	1	FP233	Pinch roller	1
FP203	Spring	1	FP234	Bushing	1
FP204	O-ring	2	FP235	Pinch roller shaft	1
FP205	Circlip	1	FP236	Nut	1
FP206	Oil cup	2	FP237	Elastic washer	1
FP207	Shaft	1	FP238	Steel ball	1
FP208	Steel ball	3	FP239	Nut	1
FP209	O-ring	2	FP240	Bolt	1
FP210	Screw	4	FP241	Circlip	1
FP211	Locating sleeve	1	FP242	Pedal rod	1
FP212	Valve rod	1	FP243	Pedal rod linking seat	1
FP213	Torsional spring	1	FP244	Rubber sleeve	1
FP214	Valve rod fixing sleeve	1	PS245	Big piston rod	1
FP215	Screw	1	FP246	Chain joint	2
FP216	Handle	1	PS247	Chain	1
FP217	Dust ring	1	FP248	Chain wheel cover	1
FP218	O-ring	2	FP249	Lock nut	1
FP219	Circlip	1	FP250	Chain wheel cover	1
FP220	Sealing pad	1	FP251	Chain wheel shaft	1
FP221	Screw	1	FP252	Circlip	2
PS222	Oil pump body	1	FP253	Chain wheel	1
FP223	Valve plug	1	FP254	Bushing	2
FP224	Spring	2	FP255	Lifting-lowering block	1
FP225	Dowel pin	1	FP256	Screw plug	1
FP226	Screw	2	FP257	Washer	1
FP227	O-ring	1	FP258	Throttle valve	1
FP228	Adjusting bolt	1	FP259	Screw	1
FP229	Screw	2	FP260	Valve cover	1
FP230	Pad	2	FP261	O-ring	1
FP231	Spring	2			

SPARE PARTS



SPARE PARTS

No.	Description	Qty.	No.	Description	Qty.
FP201	Small piston rod	1	FP232	Split pin	2
FP202	Spring cover	1	FP233	Pinch roller	1
FP203	Spring	1	FP234	Bushing	1
FP204	O-ring	2	FP235	Pinch roller shaft	1
FP205	Circlip	1	FP236	Nut	1
FP206	Oil cup	2	FP237	Elastic washer	1
FP207	Shaft	1	FP238	Steel ball	1
FP208	Steel ball	3	FP239	Nut	1
FP209	O-ring	2	FP240	Bolt	1
FP210	Screw	4	FP241	Circlip	1
FP211	Locating sleeve	1	FP242	Pedal rod	1
FP212	Valve rod	1	FP243	Pedal rod linking seat	1
FP213	Torsional spring	1	FP244	Rubber sleeve	1
FP214	Valve rod fixing sleeve	1	PS245	Big piston rod	1
FP215	Screw	1	FP246	Chain joint	2
FP216	Handle	1	PS247	Chain	1
FP217	Dust ring	1	FP248	Chain wheel cover	1
FP218	O-ring	2	FP249	Lock nut	1
FP219	Circlip	1	FP250	Chain wheel cover	1
FP220	Seal pad	1	FP251	Chain wheel shaft	1
FP221	Screw	1	FP252	Circlip	2
PS222	Oil pump body	1	FP253	Chain wheel	1
FP223	Valve plug	1	FP254	Bushing	2
FP224	Spring	2	FP255	Lifting-lowering block	1
FP225	Dowel pin	1	FP256	Screw plug	1
FP226	Screw	2	FP257	Washer	1
FP227	O-ring	1	FP258	Throttle valve	1
FP228	Adjusting bolt	1	FP259	Screw	1
FP229	Screw	2	FP260	Valve cover	1
FP230	Pad	2	FP261	O-ring	1
FP231	Spring	2			



INSPECTION LOG

INITIAL SERVICE DATE:

SERIAL NO:

DATE	NOTES	AUTH SIGNATURE

Imported exclusively by Pacific Hoists Pty. Ltd. and Pacific Hoists Ltd.
For further information in relation to this product,
please contact the branch where the product was purchased.

HEAD OFFICE

24 Foundry Road, Seven Hills NSW 2147
National Sales & Service P: 02 8825 6900
www.challengerhoists.com.au



Thank you for choosing the Challenger brand. Not only are you choosing a quality and reliable brand but you are also helping to support cancer charities in Australia & New Zealand.