

## Challenger Electric Chain Hoist

The Challenger Electric Chain Hoists offer a great balance between quality and price. The models vary from 250kg to 2 tonne capacity and are all tested to the Australian standards. All hoists are inclusive of many features which makes them suited for most applications. Optional Motorised Trolleys are available to complete the package.



## Features:

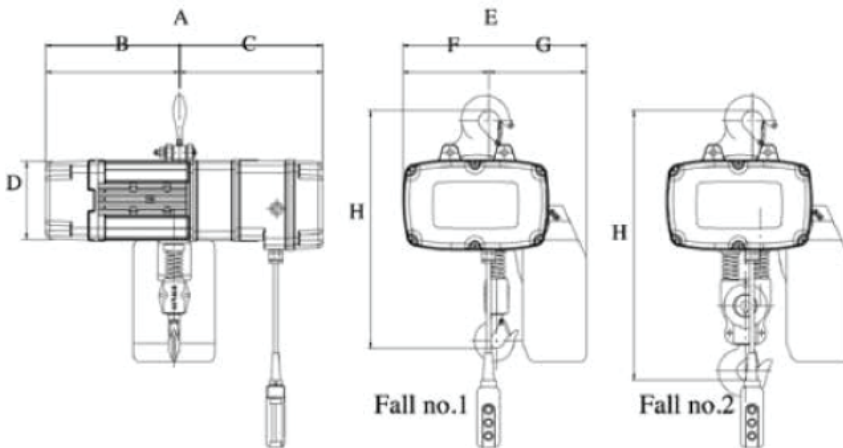
- IP54 motor, class F insulation, good thermal performance.
- DC motor brake: with two-side single disk brakes, electromagnetic brake actuates synchronously in the event of power failure to ensure the operation safety while loading.
- Total enclosed construction, withstands harsh conditions.
- Asbestos-free brake to meet international requirements.
- The thermal motor protection will activate at  $140(\pm 5)^{\circ}\text{C}$ , and prevent lifting the load. However, it will allow lower functions.
- 5-pocket chain sprocket for smooth operation (Excl. CEH500).
- Friction Clutch prevent damage from overloading.
- Setting Overload can be carried out easily at the gearbox preventing overloading.
- Upper and lower limit switches are fitted to switch off the power simultaneously.
- Phase Protection Relay ensures the safety and durability to all electrical components (Excl. CEH025).
- Grade 80 hardened and galvanised alloy steel chain, endures harsh conditions such as rain, saltwater and chemicals with minimal wear.
- Hot forged from high tensile steel.
- 360 Degree rotation
- High protection grade IP65, fully water-proof, insulated, and impact resistant
- Optional cordless remote control available upon request

The information shown is to be used as a guide only. Specifications are subject to change without notice. All materials handling or lifting jobs should be assessed individually. Pacific Hoists products are NOT to be used for lifting or lowering persons.

## Specifications

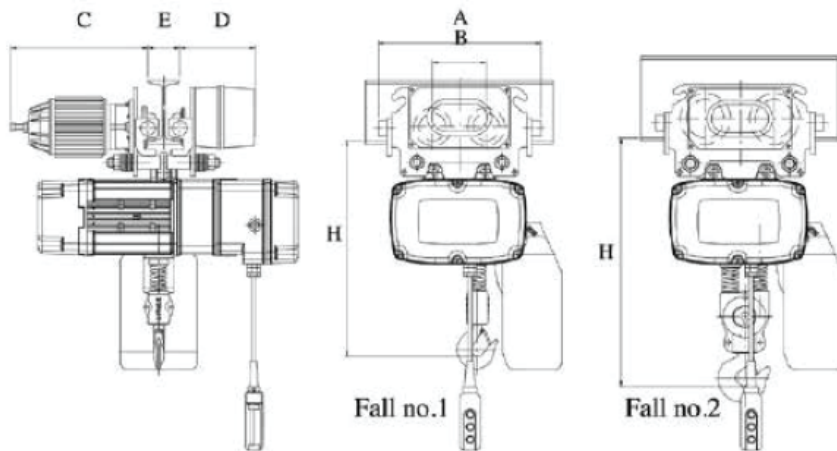
Model	Dimension (mm)								Load Chain		N.W. (kg)
	H	A	B	C	D	E	F	G	Ømm	Fall No.	
CEH025	376	380	175	205	135	299	143	156	Ø4.0x12.0	1	30
CEH050	500	570	266	304	164	375	190	185	Ø6.3x9.1	1	47
CEH100	550	616	297	319	180	409	191	218	Ø7.1x20.2	1	62
CEH200	620	616	297	319	180	409	191	218	Ø7.1x20.2	2	102

Specifications: THREE PHASE / DUAL SPEED HOISTS 415 Volt, 50Hz  
 -Higher height of lift available on request



Model	Capacity (kg)	Lift (m)	%ED	Hoisting		Hoisting	
				Speed (m/min) 50Hz	Motor (kw x pole)	Speed (m/min) 50Hz	Motor (kw x pole)
CEH025	250	3	40/20	12/3	0.6/0.15 x 2/8P	12/3	0.6/0.15 x 2/8P
CEH050	500	3	40/20	10/2.5	1.1/0.28 x 2/8P	10/2.5	1.1/0.28 x 2/8P
CEH100	1000	3	40/20	8/2	1.5/0.37 x 2/8P	8/2	1.5/0.37 x 2/8P
CEH200	2000	3	40/20	4/1	1.5/0.37 x 2/8P	4/1	1.5/0.37 x 2/8P

The information shown is to be used as a guide only. Specifications are subject to change without notice. All materials handling or lifting jobs should be assessed individually. Pacific Hoists products are NOT to be used for lifting or lowering persons.

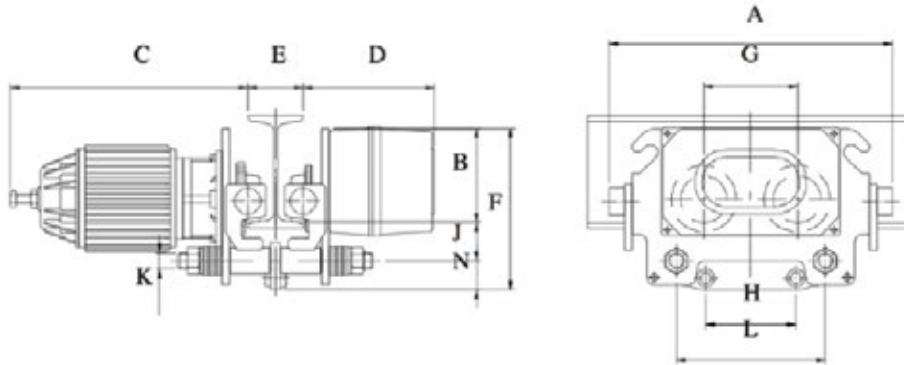


Model	Dimension (mm)						Fall No.
	H	A	B	C	D	E	
CEH025 + CET050/055	385	382	125.5	324	180	75~125	1
CEH050 + CET050/055	495	382	126	324	180	75~125	1
CEH100 + CET100/105	535	382	126	324	180	75~125	1
CEH200 + CET200/205	610	392	159	357	180	100~150	2

The information shown is to be used as a guide only. Specifications are subject to change without notice. All materials handling or lifting jobs should be assessed individually. Pacific Hoists products are NOT to be used for lifting or lowering persons.

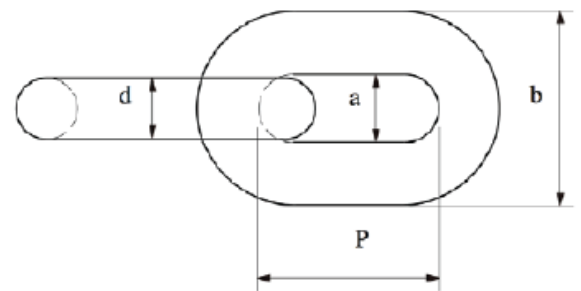
## Dimensions

Challenger Electric Motorised Trolley 3 phase / 415 Volt  
Available in Single & Dual Speed Trolleys



Model	Speed (m/min) 50Hz	Motor (kw x pole)	Dimension (mm)												N.W. (kg)	Min. Radius of Curve (m)
			A	B	C	D	E	F	G	H	L	J	N	K		
CET050	10	0.15x2P	382	124.5	324	180	75~125	217	125.5	95.5	200	51.5	41	7/8"~9UNC (Ø22.2)	45	1.3
CET055	20/5	0.12/0.03x2/8P														
CET100	10	0.18x2P	382	124.5	324	180	75~125	217	125.5	120	200	51.5	41	7/8"~9UNC (Ø22.2)	45	1.3
CET105	20/5	0.18/0.04x2/8P														
CET200	10	0.37x2P	392	125	357	183	100~150	221	159	120	230	60	36	1"~8UNC (Ø25.4)	50	1.7
CET205	20/5	0.37/0.09x2/8P														

## Specs: Challenger Load Chain



Diameter d (mm)	Model Reference Being Used	Inner Length p(mm)	Inner Width a (mm)	Outer Width b (mm)	Breaking Load (kn)
Ø4.0	CHN300	12	4.8	13.7	20
Ø6.3	CHN110	19.1	7.6	21.4	50
Ø7.1	CHN120	20.2	8.4	23.6	63

### Sydney - Head Office

24 Foundry Road  
Seven Hills, NSW 2147  
Australia

+61 (0)2 8825 6900

+61 (0)2 8825 6999

### Western Australia

8 Monash Gate  
Jandakot, WA 6164  
Australia

+61 (0)8 6253 1000

+61 (0)8 9458 9840

### Auckland NZ

11 Druces Road  
Wiri, Auckland 2104  
New Zealand

+64 (0)9 263 5566

+64 (0)9 263 5567

