



Capacity Range▶ 10 - 1000 tons

Stroke Range▶ 2 - 24 in.

Maximum Pressure▶ 10,000 psi

- ▶ Collar threads designed for full load (10-200 tons).
- ▶ Removable load cap for flexibility and safety.
- ▶ Stop ring for piston blow-out protection.
- ▶ Plated piston to resist scoring & corrosion.
- ▶ Large bearings resist side load.
- ▶ Rod wiper protects inner cylinder from dirt.
- ▶ Custom strokes and capacities up to 1,500 tons available, contact factory.

RDA10006 Shown -
with optional o/c valve (sold separately)

Cylinders



GAUGES - page 77

Improve your system visibility and safety by adding an inline hydraulic gauge to your circuit.



POWER PUMPS - pages 43 - 65

Simplex offers a wide variety of lightweight power pumps to fit any application.



MANIFOLDS - page 73

The ideal solution in obtaining precise control when operating multiple cylinders.

DESIGN CONSTRUCTION 200+ TONS



Bronze Inlay

Thick bronze inlay on the inner diameter of the retaining nut protects the piston rod.

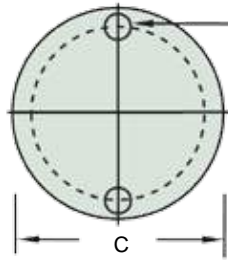


Piston Flange

A thick bronze inlay on the piston flange virtually eliminates scoring of cylinder bore while offering the best protection against accidental side loading. (200 Tons and up)

Maintenance crews relied on Simplex RDA15018 cylinders to help lift, transport and launch a U.S. Navy research ship from dry dock to the ship's launch site. ▼

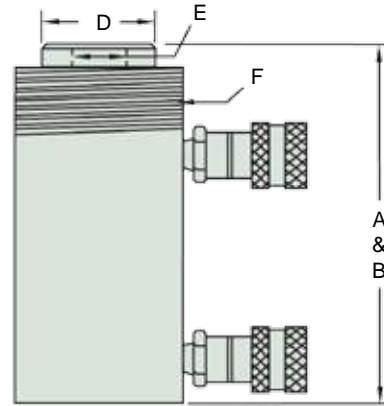




Refer to Base Mounting Table

Base Mounting Hole Dimensions

Model	Thread		Bolt Circle Diameter (in)
	Size (in)	Depth (in)	
55 Ton	.62 -11	.75	3.75
100 Ton	.62 -11	1	4.25
150 Ton	1-8	1.38	5
200 Ton	1-8	1.13	5



Model	Push Cap. (tons)	Pull Cap. (tons)	Stroke (in)	Oil Cap. Req'd. (cu.in.)	Ram Bore Dia. (in)	Push Effect Area (sq. in)	Pull Effect Area (sq.in)	Pres. @ Cap. (psi)	A	B	C	D	E		F		Wgt. (lbs)
									Min. Ht. (in)	Ext. Ht. (in)	Body O.D. (in)	Piston O.D. (in)	Piston I.D. Thrs. (in)	Piston Thrd. Depth (in)	Collar Thrs. (in)	Collar Thrd. Lgth. (in)	
RDA1010	10	4	10	22	1.68	2.23	.80	8,960	16.13	26.13	2.87	1.38	1-8	1	2.25-14	1.06	28
RDA308	30	12.5	8.13	34	2.87	6.51	3	9,250	15.75	23.75	4	2.13	1.5-16	1	3.31-12	1.93	40
RDA3014	30	12.5	14.5	91	2.87	6.51	3	9,250	21.62	36.13	4	2.13	1.5-16	1	3.31-12	1.93	64
RDA556	55	17	6.13	46	3.75	11.05	3.4	9,955	13.13	19.25	5	3.13	1-12	1.5	5-12	1.75	68
RDA5512	55	17	12	92	3.75	11.05	3.4	9,955	19.13	31.13	5	3.13	1-12	1.5	5-12	1.75	114
RDA5524	55	17	24	184	3.75	11.05	3.4	9,955	31.62	55.62	5	3.13	1-12	1.5	5-12	1.75	201
RDA1006	100	45	6.06	77	5.25	21.65	9.08	9,239	13.87	19.93	7	4	3.25-12	2.5	7-12	2.5	140
RDA10012	100	45	12	151	5.25	21.65	9.08	9,239	19.87	31.87	7	4	3.25-12	2.5	7-12	2.5	187
RDA1506	150	67	6.06	120	6.5	33.18	13.55	9,041	15.44	21.5	8.5	5	3.5-12	2.75	8.5-12	2.19	218
RDA15012	150	67	12	236	6.5	33.18	13.55	9,041	21.5	33.5	8.5	5	3.5-12	2.75	8.5-12	2.19	295
RDA2002	200	72	2	66	7.5	44.18	15.91	9,054	11.44	13.44	10	6	2.5-12	2.5	9.75-12	1.87	232
RDA2006	200	72	6	170	7.5	44.18	15.91	9,054	15.44	21.44	10	6	2.5-12	2.5	9.75-12	1.87	315
RDA20013	200	72	13	368	7.5	44.18	15.91	9,054	22.44	35.44	10	6	2.5-12	2.5	9.75-12	1.87	440
RDA3002	355	----	2	101	9.5	70.9	20.62	10,000	13.25	15.25	12	8	----	----	----	----	277
RDA3006	355	----	6	302	9.5	70.9	20.62	10,000	17.25	23.25	12	8	----	----	----	----	441
RDA30012	355	----	12	605	9.5	70.9	20.62	10,000	23.25	35.25	12	8	----	----	----	----	688
RDA4002	565	----	2	127	12	113	49.48	10,000	12.38	14.38	14.5	9	----	----	----	----	530
RDA4006	565	----	6	382	12	113	49.48	10,000	16.62	22.62	14.5	9	----	----	----	----	670
RDA40012	565	----	12	762	12	113	49.48	10,000	22.87	34.87	14.5	9	----	----	----	----	880
RDA5002	664	----	2	156	13	132	54.19	10,000	16.5	18.5	16	10	----	----	----	----	722
RDA5006	664	----	6	471	13	132	54.19	10,000	20.5	26.5	16	10	----	----	----	----	953
RDA50012	664	----	12	942	13	132	54.19	10,000	26.5	38.5	16	10	----	----	----	----	1300
RDA6002	600	----	2	158	12.5	122.71	44.17	10,000	15	17	17	10	----	----	----	----	917
RDA6006	600	----	6	472	12.5	122.71	44.17	10,000	19	25	17	10	----	----	----	----	1188
RDA60012	600	----	12	944	12.5	122.71	44.17	10,000	25	37	17	10	----	----	----	----	1595
RDA8002	800	----	2	226	14.5	165.13	52.03	9,690	16	18	18.5	10	----	----	----	----	1166
RDA8006	800	----	6	991	14.5	165.13	52.03	9,690	21.5	27.5	18.5	10	----	----	----	----	1461
RDA80012	800	----	12	1,360	14.5	165.13	52.03	9,690	26	38	18.5	10	----	----	----	----	1776
RDA10002	1000	----	2	354	17	227	50.27	8,810	16	18	21	15	----	----	----	----	1558
RDA10006	1000	----	6	1,071	17	227	50.27	8,810	20	26	21	15	----	----	----	----	2058
RDA100012	1000	----	12	2,142	17	227	50.27	8,810	27	39	21	15	----	----	----	----	2808