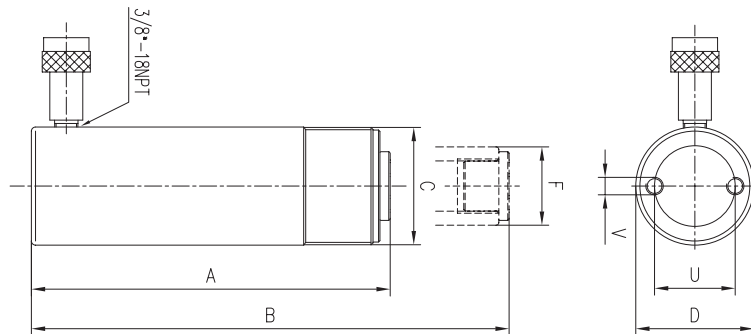


Features

1. Complies to ASME B-30.1. High strength alloy steel for safety and durability
2. Inside cylinder treated to enhance durability
3. Collar threads, plunger threads and base mounting holes enable easy fixture
4. Heavy duty plunger spring return
5. High quality 3/8-18 NPT quick coupling
6. Baked enamel finish for increased corrosion resistance



PSC Specifications

Capacity @ 700 bar tonne	5						10								15				
Stroke mm	16	25	76	127	178	232	25	54	105	156	203	257	305	356	25	51	102	152	203
Product Code	PSC50	PSC51	PSC53	PSC55	PSC57	PSC59	PSC101	PSC102	PSC104	PSC106	PSC108	PSC1010	PSC1012	PSC1014	PSC151	PSC152	PSC154	PSC156	PSC158
Cylinder Effective Area cm2	7						14.5								21				
Oil Capacity cm3	11	17	53	87	123	160	38	78	151	225	294	370	440	515	52.5	107.5	214	319	420
Collapsed Height A mm	41	110	165	216	273	324	90	121	171	248	298	349	400	451	124	149	200	272	322
Extended Height B mm	57	135	241	343	451	556	115	175	276	404	501	606	705	807	149	200	302	434	525
Collar Diametre C	1 1/2"						2 1/4"								2 3/4"				
Outside Diametre D mm	38						57								69				
Piston Rod Diametre Fmm	25						38								42				
Bolt Centres U mm	25						39								47				
Thread V	1/4"-20						5/16"-18								3/8"-16				
Weight kg	1	1	1.5	1.9	2.4	2.8	1.8	2.3	3.3	4.4	5.4	6.4	6.8	8.2	3.3	4.1	5	6.8	8.2

Capacity @ 700 bar tonne	15			25							30	50				75		100		
Stroke mm	254	305	356	25	51	102	159	210	260	311	362	210	51	102	159	337	156	334	168	260
Product Code	PSC1510	PSC1512	PSC1514	PSC251	PSC252	PSC254	PSC256	PSC258	PSC2510	PSC2512	PSC2514	PSC308	PSC502	PSC504	PSC506	PSC5013	PSC756	PSC7513	PSC1006	PSC10010
Cylinder Effective Area cm2	21			33.2							44	70.8				103.8		132.6		
Oil Capacity cm3	533	640	747	85	169	339	528	697	863	1033	1202	919	362	722	1127	2388	1619	3467	2225	3445
Collapsed Height A mm	373	424	475	140	165	216	273	324	375	425	476	387	176	227	283	461	285	492	357	449
Extended Height B mm	627	729	831	165	216	318	432	534	635	736	838	597	227	329	442	798	442	826	525	709
Collar Diametre C	2 3/4"			3 5/16"								5"				5 3/4"		6 7/8"		
Outside Diametre D mm	69			86							102	127				146		178		
Piston Rod Diametre Fmm	42			57							57	80				95		105		
Bolt Centres U mm	47			58							-	95				-		139		
Thread V	3/8"-16			1/2"-13							-	1/2"-13				-		3/4"-10		
Weight kg	9.5	10.9	11.8	5.9	6.4	8.2	10	12.3	14.1	16.3	17.7	18.1	15	19.1	23.2	37.7	29.5	59	59	72.6

The information contained in this brochure is to be used as a guide only, specifications are subject to change without notice.

Head Office
Brisbane

24 Foundry Road Seven Hills NSW 2147 P +61 2 8825 6900 F +61 2 8825 6999
Unit 5, 54 Nealdon Drive Meadowbrook QLD 4131 P +61 7 3170 3800 F +61 7 3170 3811

Perth
Auckland

Unit 1, 31 Colin Jamieson Drive Welshpool WA 6106 P +61 8 6253 1000 F +61 8 9458 9840
11 Druces Road Manukau City South Auckland P+ 64 9263 5566 F + 64 9263 5567